

Daily Derivatives & Market Report

CONTENTS

Page No.	Particulars
2	Market Summary
3	Nifty Futures – Derivatives Snap
4	Bank Nifty Futures – Derivatives Snap
5	Activity in Nifty Options
6	What do Nifty Technical suggest
7	Derivative Analysis
8	Disclaimer

Index Trend Analysis

Pivot(Daily)	Close	R2	R1	Pivot	S1	S2	Daily	Weekly	Monthly
Nifty	9445	9465	9455	9439	9429	9413	Buy	Buy	Buy
Sensex	30188	30388	30288	30200	30100	30011	Buy	Buy	Buy
Nifty Futures	9453	9470	9462	9449	9441	9428	Buy	Buy	Buy
Bank Nifty	22822	22976	22899	22815	22737	22653	Buy	Buy	Buy
CNX IT	10340	10452	10396	10345	10289	10237	Buy	Buy	Sell

Market Summary

Domestic Indices	Close	Points	% Chg
SENSEX	30322.1	133.9	0.44
NIFTY	9445.4	44.50	0.47
MIDCAP	15040.5	186.0	1.25
SMLCAP	15650.4	121.5	0.78
BSEFMC	9521.7	47.47	0.50
AUTO	23367.1	121.6	0.52
POWER	2332.5	14.72	0.64
REALTY	2087.11	19.51	0.94
BSE IT	9981.7	-40.78	-0.41
BANDEX	25927.9	210.8	0.82
OILGAS	14378.8	106.3	0.74
METAL	11326.7	265.0	2.40

Currency Futures	Close	Pre. Pts	% Chg
29-May-16 EUR-INR	70.48	70.16	0.46
29-May-16 USD-INR	64.17	64.43	-0.43
29-May-16 GBP-INR	83.06	82.87	0.20
29-May-16 JPY-INR	56.60	56.62	-0.13

Advance/ Decline	Adv	Dec	Un Ch.
NSE	969	688	101
BSE	1481	1299	209

FII/DII Capital Mkt*	Buy	Sell	Net
FII	4614	4378	235
DII	2187	2253	(66)

*NOTE: - FII AND DII data figure is provisional

Market Commentary

Indian stock markets witnessed a fairly stable day of trade on Monday as sanguinity got reinforced after consumer inflation in April eased to its lowest in at least five years, reviving a debate on whether the central bank should cut interest rates. Hopes for further easing of inflation got a boost with the India Meteorological Department (IMD) stating that monsoon rains had reached the country's Andaman and Nicobar islands ahead of the schedule. Meanwhile, Consumer Price Index (CPI)-based inflation eased to 2.99% in April, from 3.89% in March, due to lower cost of food items. Also, the inflation based on the wholesale price index (WPI) slipped to a four-month low of 3.85% in April as both food articles and manufactured items showed cooling in prices. The street shrugged off industrial output growth data which slipped to 2.7% in March compared to 5.5% in March 2016, mainly on account of poor performance of manufacturing sector.

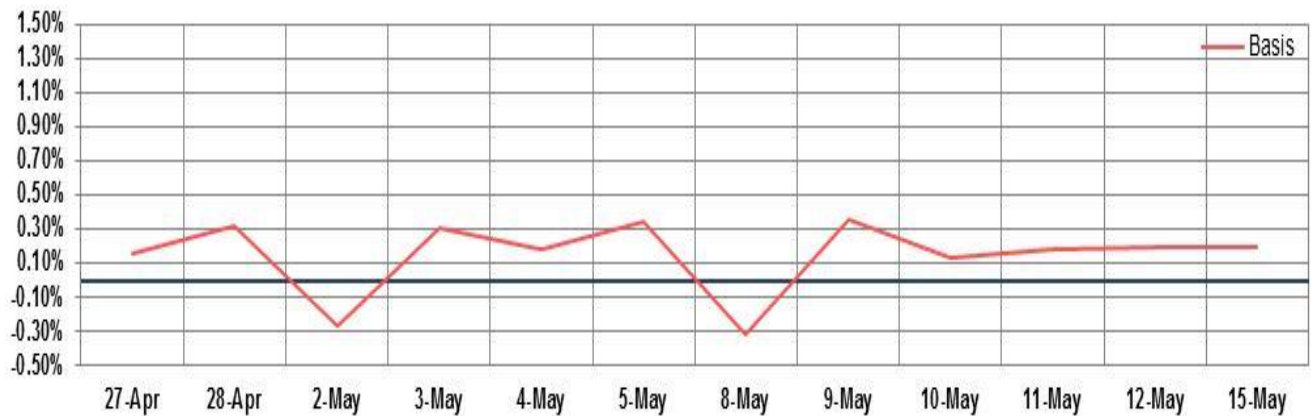
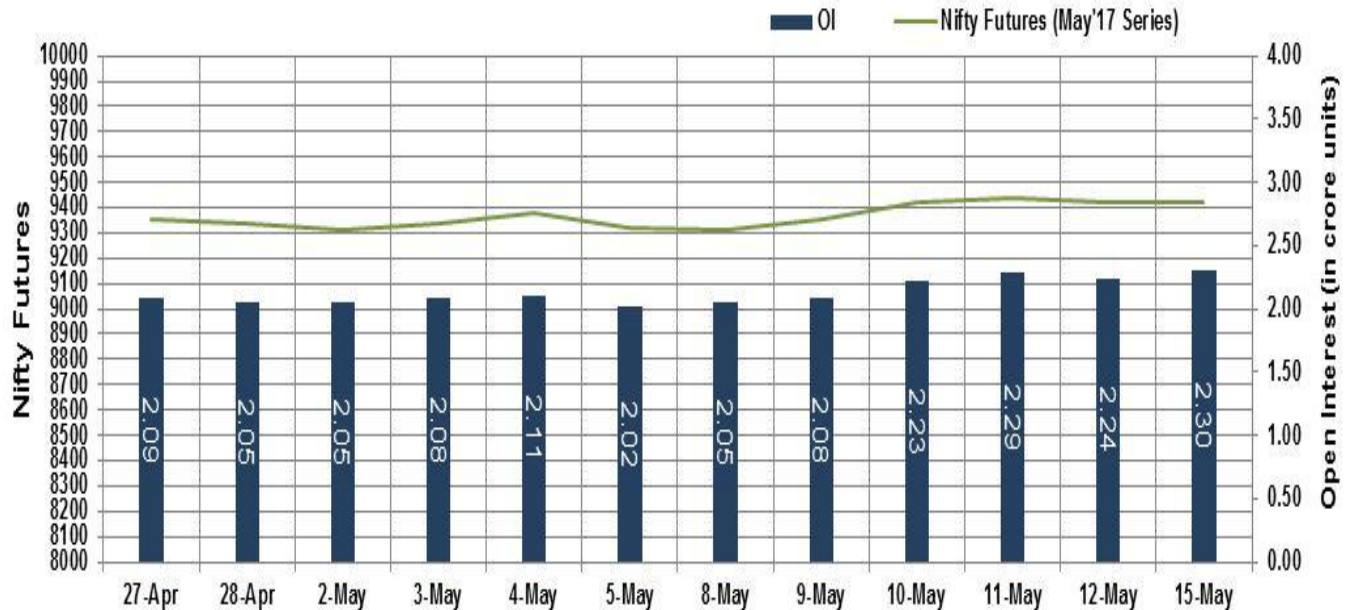
On the global front, Asian markets ended mostly higher on Monday as oil prices jumped and weak US data raised a question mark over the extent of Fed tightening. Yet another missile launch by North Korea too appeared to have little impact, while upbeat talk on trade and infrastructure investment at a top-level conference in China brightened sentiment. Oil prices jumped after Saudi Arabia's energy minister and Russia's oil minister said at a joint briefing in Beijing that they agreed output cuts should be extended to March 2018.

Market Turnover & FII Derivative Data

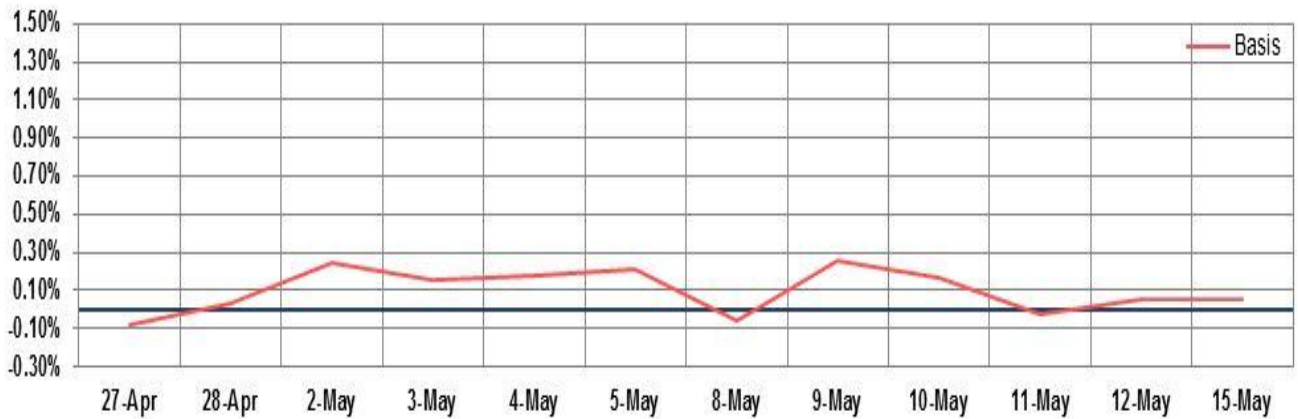
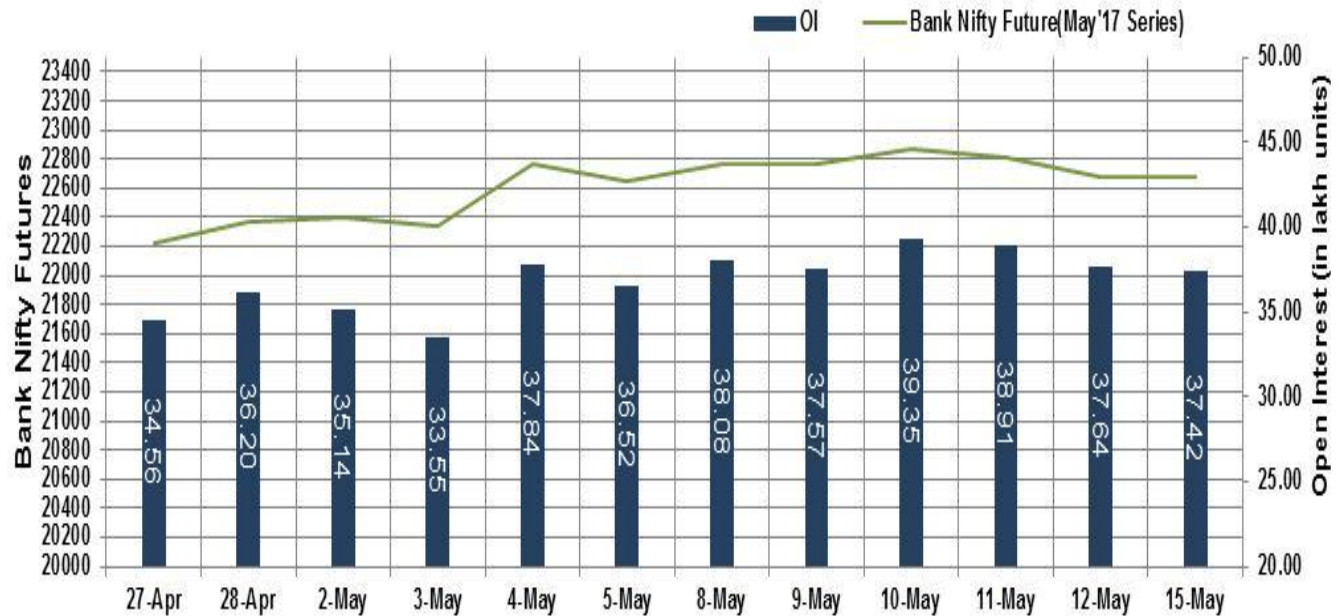
Market TO	Current	Previous	Net%
BSE CASH	3872	4031	(4)
NSE CASH	22917	25184	(9)
NSE FO	318067	371395	(14)

FII Derivatives	Buy	Sell	Net
Ind. Futures	871	988	(117)
Ind. Options	21332	21308	24
Stk. Futures	7514	7323	191
Stk. Options	6186	6194	(8)

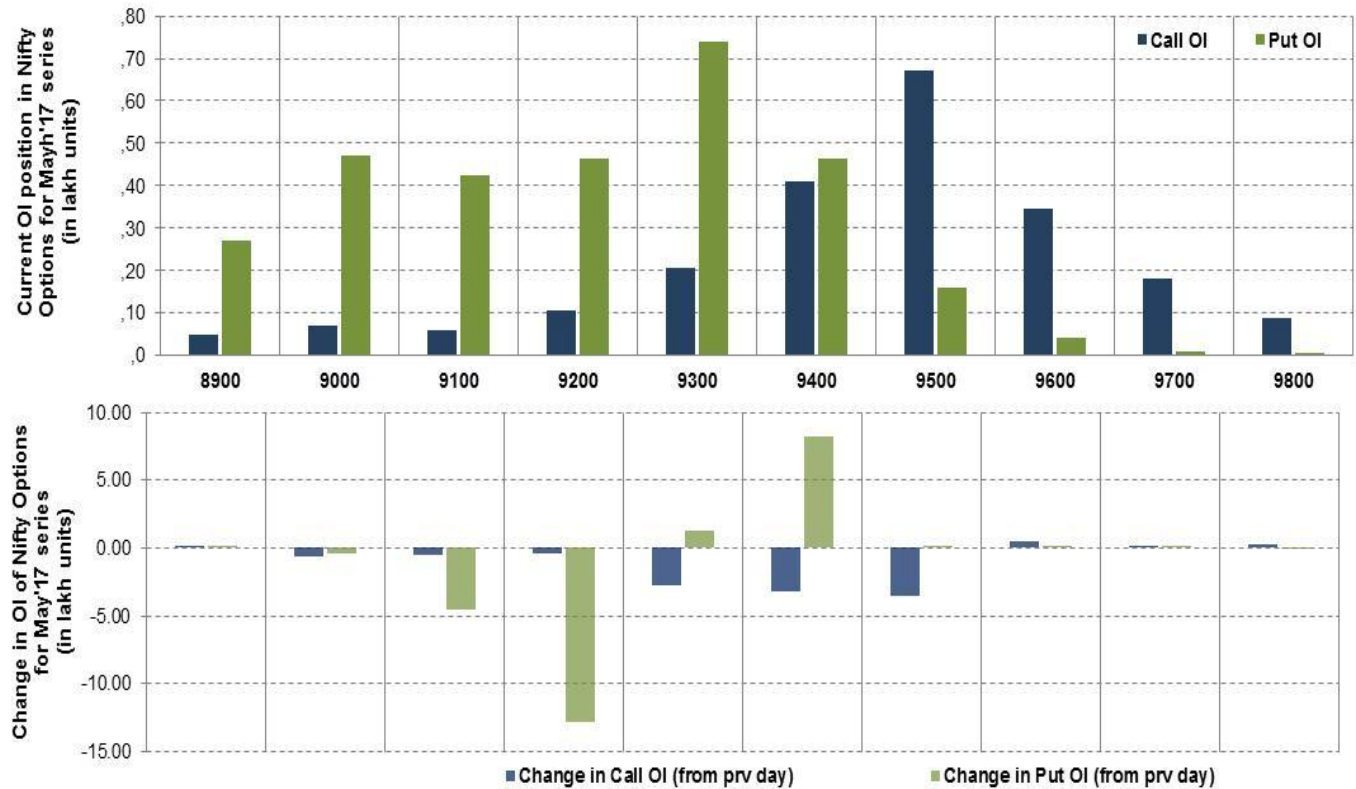
Nifty Futures



Bank Nifty Futures



Nifty Options

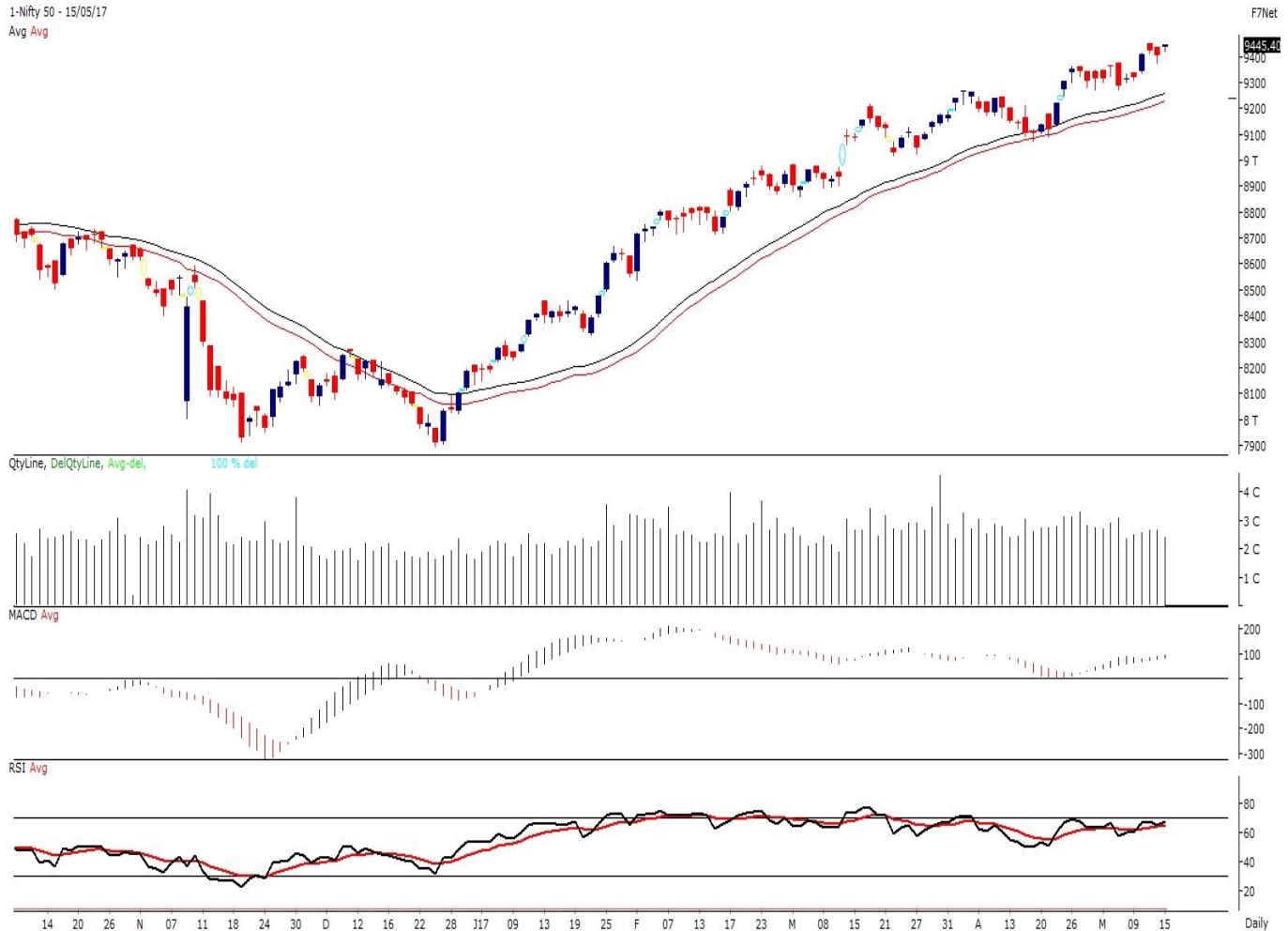


Note – Change in OI of Nifty Options refers to change from previous trading day
 Source-NSE, SIHL Derivatives Research (Institutional Equities)

- Among Nifty calls 9,500 SP from the May month expiry was the most active call with a reduction of 0.35 million in open interest.
- Among Nifty puts, 9,300 SP from the May month expiry was the most active put with an addition of 0.13 million open interests.
- The maximum OI outstanding for Calls was at 9,500 SP (6.72mn) and that for Puts was at 9,300 SP (7.39mn).

Nifty Technical & Indices Levels

1-Nifty 50 - 15/05/17
 Avg Avg



Nifty Cash prices have settled at 9445.4 up by 0.47% from its previous close. On the upper side prices are likely to trade higher till 9500 and 9550 levels, while lower side it has support of 9400 and 9350 levels. Intraday traders should be cautious and take position accordingly.

Fresh Longs ↑ Open Interest ↑ Price					
Script	Prev. OI	Cur. OI	% Chg. OI	LTP	Price % Chg
SHREECEM	27,000	36,000	33.33	20344.80	2.92
PEL	676,800	863,700	27.62	2881.20	10.25
PAGEIND	23,650	28,450	20.30	15521.55	3.18
MRPL	3,712,500	4,356,000	17.33	134.60	3.78
Short-Covering ↓ Open Interest ↑ Price					
Script	Prev. OI	Cur. OI	% Chg. OI	LTP	Price % Chg
GODREJCP	554,400	526,000	-5.12	1916.25	0.67
TATACOMM	7,141,400	6,772,500	-5.17	687.85	2.27
ESCORTS	1,566,400	1,474,000	-5.90	650.45	0.33
ASIANPAINT	3,459,000	3,161,400	-8.60	1148.25	1.23
Fresh Shorts ↑ Open Interest ↓ Price					
Script	Prev. OI	Cur. OI	% Chg. OI	LTP	Price % Chg
GLENMARK	5,184,900	6,684,300	28.92	718.55	-5.75
NESTLEIND	68,400	79,800	16.67	6600.75	-3.34
FORTIS	12,228,300	14,245,200	16.49	206.95	-1.10
IDEA	76,419,000	86,142,000	12.72	86.00	-7.33
Long Unwinding ↓ Open Interest ↓ Price					
Script	Prev. OI	Cur. OI	% Chg. OI	LTP	Price % Chg
JISLJALEQS	51,228,000	49,653,000	-3.07	97.80	-2.64
CANBK	18,957,350	18,334,380	-3.29	362.45	-0.40
KTKBANK	28,902,620	27,774,250	-3.90	164.40	-0.84
NIITTECH	759,000	682,500	-10.08	524.40	-0.71

Disclaimer:

The Information provided by SMS or in newsletter or in any document has been prepared by Shah Investor's Home Ltd (SIHL). The Information provided by SMS or in newsletter does not constitute an offer or solicitation for the purchase or sale of any financial instrument or as an official confirmation of any transaction. The information contained herein is from publicly available data or other sources believed to be reliable, but we do not represent that it is accurate or complete and it should not be relied on as such. SIHL or any of its affiliates/ group companies shall not be in any way responsible for any loss or damage that may arise to any person from any inadvertent error in the information contained in this report or SMS. This Information provided by SMS, reports or in newsletter is provided for assistance only and is not intended to be and must not alone be taken as the basis for an investment decision. The user assumes the entire risk of any use made of this information. Each recipient of this Information provided by SMS, report or in newsletter should make such investigation as it deems necessary to arrive at an independent evaluation of an investment in the securities of companies referred to in this information provided by SMS, report or in newsletter (including the merits and risks involved), and should consult his own advisors to determine the merits and risks of such investment. The investment discussed or views expressed may not be suitable for all investors. This information is strictly confidential and is being furnished to you solely for your information.

The information should not be reproduced or redistributed or passed on directly or indirectly in any form to any other person or published, copied, in whole or in part, for any purpose. The information provided by report or SMS is not directed or intended for distribution to, or use by, any person or entity who is a citizen or resident of or located in any locality, state, country or other jurisdiction, where such distribution, publication, availability or use would be contrary to law, regulation or which would subject SIHL and affiliates/ group companies to any registration or licensing requirements within such jurisdiction. The distribution of this Information provided by SMS or in newsletter in certain jurisdictions may be restricted by law, and persons in whose possession this Information provided by SMS or in newsletter comes, should inform themselves about and observe, any such restrictions. The information given or Information provided by SMS, report or in newsletter is as of the date of the issue date of report or the date on which SMS provided and there can be no assurance that future results or events will be consistent with this information. This information is subject to change without any prior notice. SIHL reserves the right to make modifications and alterations to this statement as may be required from time to time. However, SIHL is under no obligation to update or keep the information current.

Nevertheless, SIHL is committed to providing independent and transparent recommendation to its client and would be happy to provide any information in response to specific client queries. Neither SIHL nor any of its affiliates, group companies, directors, employees, agents or representatives shall be liable for any damages whether direct, indirect, special or consequential including lost revenue or lost profits that may arise from or in connection with the use of the information. Past performance is not necessarily a guide to future performance. The disclosures of interest statements incorporated in the Information provided by SMS, report or in newsletter are provided solely to enhance the transparency and should not be treated as endorsement of the views expressed in the report. The analyst for this report certifies that all of the views expressed in this report accurately reflect his or her personal views about the subject company or companies and its or their securities, and no part of his or her compensation was, is or will be, directly or indirectly related to specific recommendations or views expressed in this report.

About Us:

Shah Investor's Home Ltd (SIHL) is an ISO 9001:2008 Certified financial Services Company established in 1994 at Ahmadabad, Gujarat. Customer satisfaction is guaranteed through our diversified product portfolio, professional management and customer first attitude. SIHL was the first broking house in Gujarat with membership in National Securities Depository Ltd (NSDL) and was the first broking name providing services in NSE F&O in Ahmedabad. Today, SIHL ranks among the top most players in Gujarat in retail stock broking area with 45 branches, 350 franchisee across India and providing service to more than 1,25,000 clients.